

Reading




1. How do *you* feel towards the robot? Why?
2. Why is this image called 'Patience'?
3. Does this robot have any friends or family? Why or why not?
4. Can he feel emotions? If so, how do you know? Which ones?

Grammar

a

Rewrite this sentence in the passive voice:

The surfer performed a trick.



b

Add a subordinating conjunction and continue the multi-clause (complex) sentence. Add an adverb.

The mysterious letter lay on the table _____

c

Can you think of the correct -cial or -tial words to match the definitions:

incomplete _____

absolutely vital _____

fake _____

d

Mr Whoops has got in a terrible muddle and has lost half of his hyphenated compound adjectives. Can you help him?

free- _____

warm- _____

Could you use one of the words you have made in a sentence with added parenthesis? _____

e

Underline the noun phrase and circle the prepositional phrase in this sentence:


The ugly, lonely monster hid under the stairs.

f

Can you think of a pair of near homophones that could fit into these sentences:

After a sleepless night, the new parents felt _____ and exhausted.

After the horse threw her off, the rider was a little _____ of getting back into the saddle.



Maths

Read and Write Roman Numerals up to 1,000		Back to Basics	
Write these Roman Numerals in numbers:			
1.)	LXVIII	5.)	$\frac{6912}{64} =$
2.)	DCCCXXXV	6.)	$3,398 \times 93 =$
Write these numbers in Roman Numerals		7.)	$6,598 + 786 =$
3.)	93	8.)	$4,329 - 2,198 =$
4.)	741		

Spelling

Choose 10 spellings that you are unsure of, practise spelling them, using them in a sentence and write their definition.

accommodate	category	determined	foreign	lightning	profession	sincerely
accompany	cemetery	develop	forty	marvellous	programme	soldier
according	committee	dictionary	frequently	mischievous	pronunciation	stomach
achieve	communicate	disastrous	government	muscle	queue	sufficient
aggressive	community	embarrass	guarantee	necessary	recognise	suggest
amateur	competition	environment	harass	neighbour	recommend	symbol
ancient	conscience	equip	hindrance	nuisance	relevant	system
apparent	conscious	equipped	identity	occupy	restaurant	temperature
appreciate	controversy	equipment	immediate	occur	rhyme	thorough
attached	convenience	especially	immediately	opportunity	rhythm	twelfth
available	correspond	exaggerate	individual	parliament	sacrifice	variety
average	criticise	excellent	interfere	persuade	secretary	vegetable
awkward	curiosity	existence	interrupt	physical	shoulder	vehicle
bargain	definite	explanation	language	prejudice	signature	yacht
bruise	desperate	familiar	leisure	privilege	sincere	

Pick a challenge to complete this week.

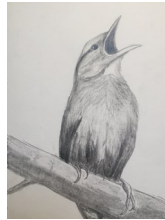
Geography

Go litter picking in your local area, making sure you have asked an adult first. Make sure you are wearing gloves if you have to pick the litter up with your hands. Have a look at the types of litter that you find. What is the most common type of litter that you collected



Art

Make some observational drawings of nature. Remember to add different textures to your drawings e.g line work, cross hatching and include shading where needed.



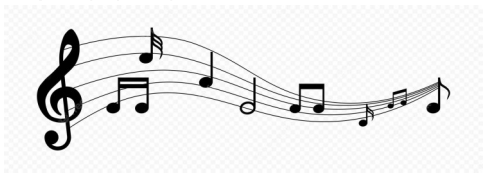
Science

Create a Dichotomous key using different types of animals. Here is a picture of the key below to help you.



Music

Listen to your favourite song. Then recreate this using different items that you can find around the house. As a challenge, change the genre of the song that you have chosen. E.g country to pop, rap to blues etc



PE

Research about The Ashes Cricket Tournament. Look at the players, stadiums and rules. Why is it called 'The Ashes'? Create a fact file on this topic.



PSHE

Make a list of things you are looking forward to and unsure of moving up to a new year group.



Year 6's
Home Learning

Homework due back on
Wednesday 12th July 2023